

Selection of Partnership Projects

A technical committee (Technisches Komitee; TK) comprised of medical experts with long-term expertise in the international and development sector evaluates the application based on the following criteria:

- **Relevance:** Partnership projects are oriented by the needs of the partner institution, considers local context, and addresses demands of vulnerable groups
- **Efficiency:** Project management is stable and responsibilities are clarified; time and financial planning is appropriate; contributions of the German applicant are transparent; resources are efficiently and appropriately used
- **Effectiveness:** Aspects of implementation and impact are recognized; professional consistency and coherence is evident; goals, activities, and indicators are coordinated; goals are continuously revised
- **Sustainability:** The partnership project has a long-term vision; institutional support is intended in which capacities are strengthened and processes are optimised
- **Ethically acceptable:** The foundation of the project is ethically and politically acceptable
- The applying institution conducts business in an economical manner

This is how to apply

Information on the funding program can be found at: www.hospitalpartnerships.org

Contact:

Hospital Partnerships – Partners strengthen Health

Deutsche Gesellschaft für
Internationale Zusammenarbeit (GIZ) GmbH
Friedrich-Ebert-Allee 36
53113 Bonn, Germany

T +49 (0)228 4460 3800
E linikpartnerschaften@giz.de



www.hospitalpartnerships.org

Legal Notice

Publisher:

Deutsche Gesellschaft für
Internationale Zusammenarbeit (GIZ) GmbH
Registered offices Bonn and Eschborn
Globalvorhaben Klinikpartnerschaften –
Partner stärken Gesundheit
Friedrich-Ebert-Allee 36
53113 Bonn, Germany
T +49 (0) 228 4460 38 00
F +49 (0) 228 4460 80 1163
E linikpartnerschaften@giz.de
I www.hospitalpartnerships.org

Editor: Liva Haensel, Bonn

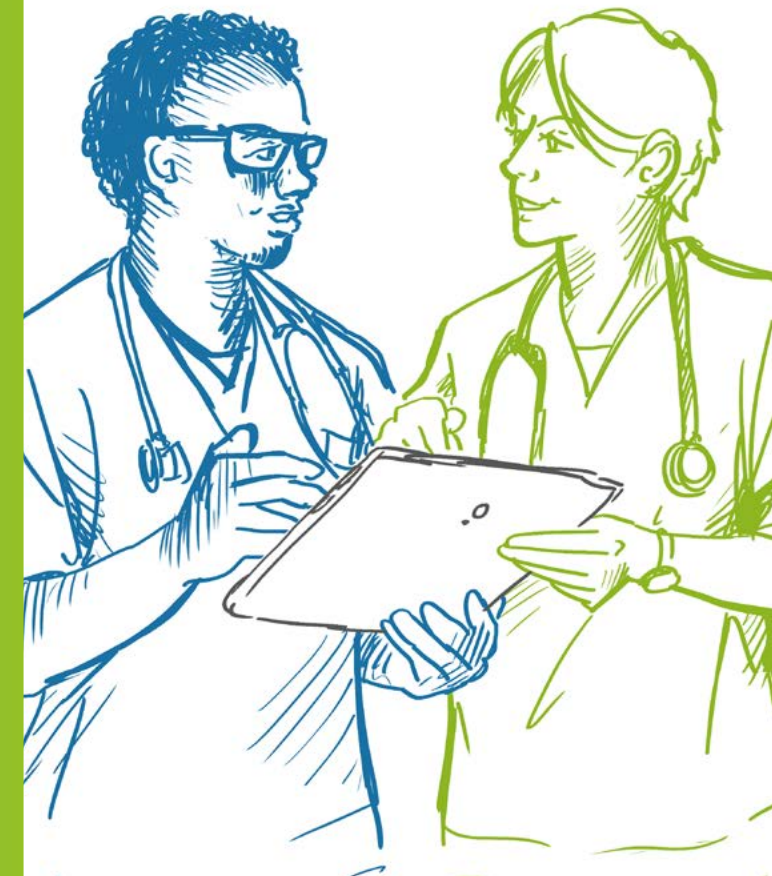
Design: DIAMOND media GmbH, Neunkirchen-Seelscheid

Photo credits/sources: ©GIZ



**HOSPITAL
PARTNERSHIPS**

Funding at a Glance



The funding program **Hospital Partnerships – Partners strengthen Health** supports partnership projects between German health institutions and partner institutions in low- and middle-income countries.

Fundamentales

Successful partnerships are based on:

- shared responsibility and **cooperative implementation**
- long-term **exchange at eye-level**
- **the development of a win-win situation through knowledge transfer** (i.e. disease patterns and treatment methods)
- focus of the project **on regulations and principals in the partner country**
- **professional-ethical principles:** focus on international standards/guidelines in the field, consideration of gender and diversity aspects and ethical questions and principles



Requirements

Funding proposals are submitted by the **German institution**. They meet the following criteria:

- **It concerns a public institution and/or a non-profit organization in Germany**
- Qualified personnel on **both sides** are available for implementation
- **A long-term, institutional partnership is identifiable/in preparation**

For **partner institutions** the following criteria is relevant:

- The project is implemented in a **low- and middle-income country** defined by the OECD-DAC criteria
- The partner institution provides a legal entity or rather a legal person; it offers **public health services**; it aims to improve the health situation in the partner country through medically relevant measures (UN-Sustainable Development Goal 3)

Associations and organisations in the partner country without independent health services (such as academic institutions and vocational schools) cannot be project partners.

Utilisation of Funds

Extent of funding: up to 50.000€

Time Frame:

maximum two years with the possibility of subsequent funding

Utilisation:

- **Travel costs** (i.e. flight costs, accommodation, meals, visa, insurance, daily expenses)
- **Training costs** (i.e. room fees, training materials, translations, fees/catering during training)
- **Equipment** (up to 30% of the total grant for instruments, consumable materials, renovation costs)
- **Administrative costs in the amount of 5%** of the remaining budget
- **Not funded:** staff wages, fundamental building plans, research projects; transferring funds to third parties is not permitted

The **funding contracts** are grant contracts which are made with the GIZ. The legal base is the ANBestP (Annex 2 of VV Nr. 5.1. § 44 BHO General Auxiliary Conditions for Grants for the Promotion of Project Funding).